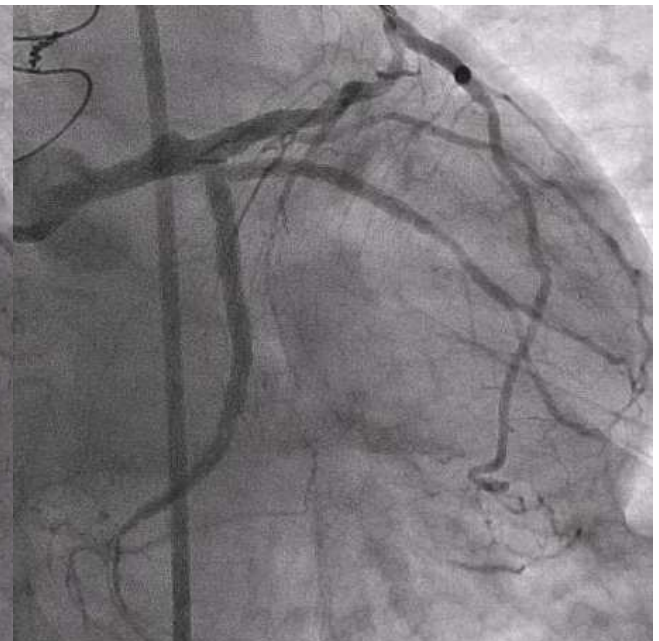
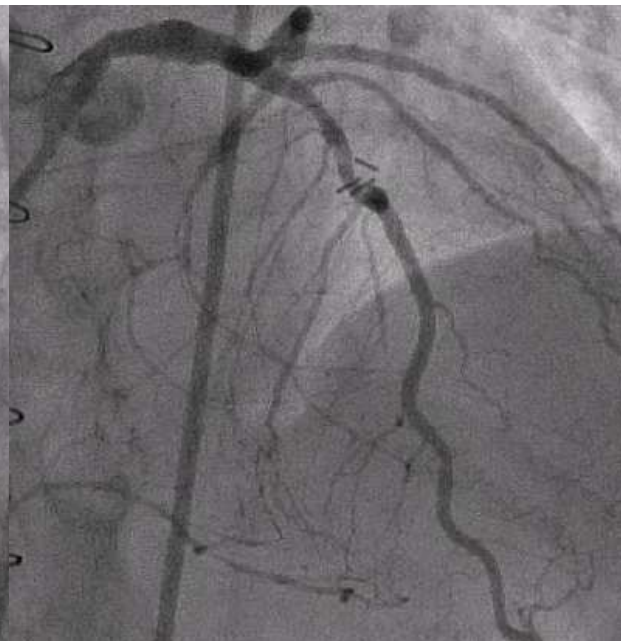
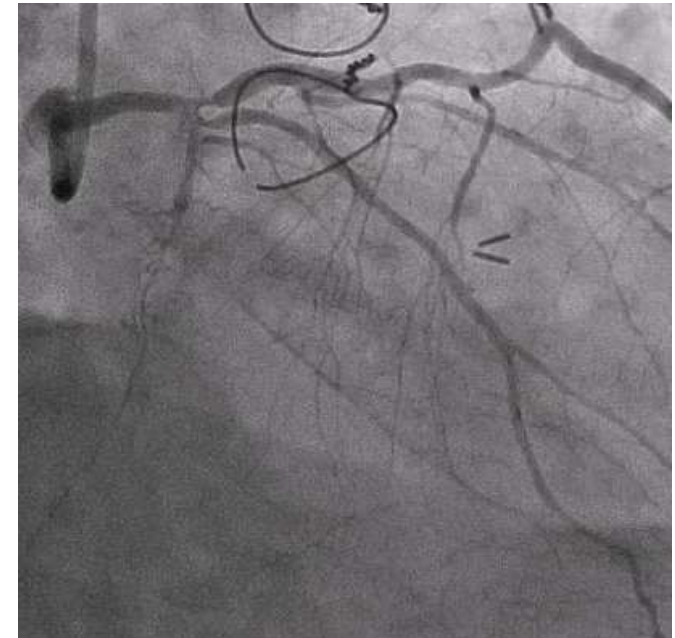
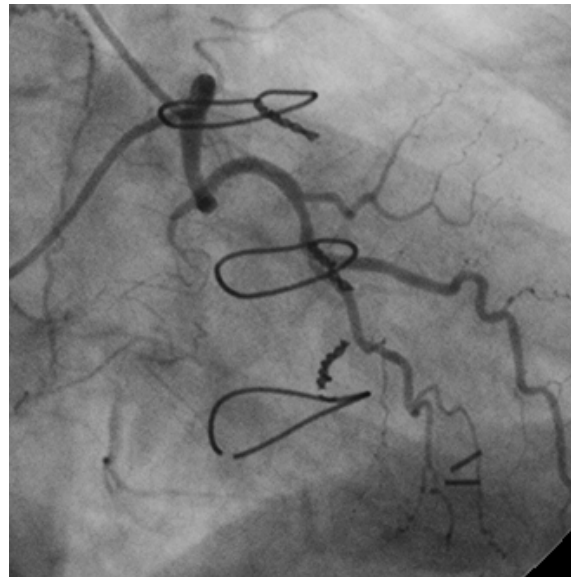
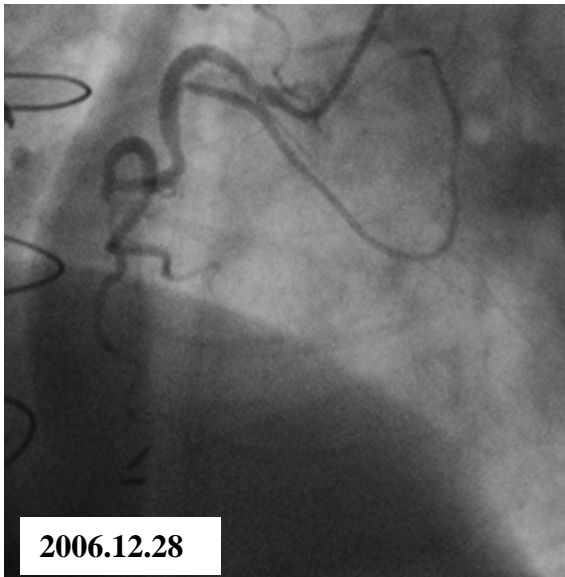


Case 6



NK CTO club Live Case 4 :

Target Lesion : RCA-# 2 :100%(CTO)

Diagnosis : AP

Clinical Course :

1999.11.. He suffered from AMI.PCI was performed(LAD-#7:stent).

2007.03.. PCI was performed to RCA. But guide wire did not pass.

2008.01.. Re-PCI was performed to RCA.

Unfortunately It ended in failure again with CART technique.

Coronary risk factor : HT,HL,DM,

Previous angiogram findings : 2008.1.7

RCA-#2:100%, LAD-#6:50%,

Final MSCT findings : non

Case 7

